

MAPK12 Antibody (monoclonal) (M05)**Mouse monoclonal antibody raised against a partial recombinant MAPK12.****Catalog # AT2783a****Specification**

MAPK12 Antibody (monoclonal) (M05) - Product Information

Application	WB, IF
Primary Accession	P53778
Other Accession	BC015741
Reactivity	Human
Host	mouse
Clonality	Monoclonal
Isotype	IgG1 Kappa
Calculated MW	41940

MAPK12 Antibody (monoclonal) (M05) - Additional Information**Gene ID** 6300**Other Names**

Mitogen-activated protein kinase 12, MAP kinase 12, MAPK 12, Extracellular signal-regulated kinase 6, ERK-6, Mitogen-activated protein kinase p38 gamma, MAP kinase p38 gamma, Stress-activated protein kinase 3, MAPK12, ERK6, SAPK3

Target/Specificity

MAPK12 (AAH15741, 251 a.a. ~ 367 a.a) partial recombinant protein with GST tag. MW of the GST tag alone is 26 KDa.

Dilution

WB~~1:500~1000

IF~~1:50~200

Format

Clear, colorless solution in phosphate buffered saline, pH 7.2 .

Storage

Store at -20°C or lower. Aliquot to avoid repeated freezing and thawing.

Precautions

MAPK12 Antibody (monoclonal) (M05) is for research use only and not for use in diagnostic or therapeutic procedures.

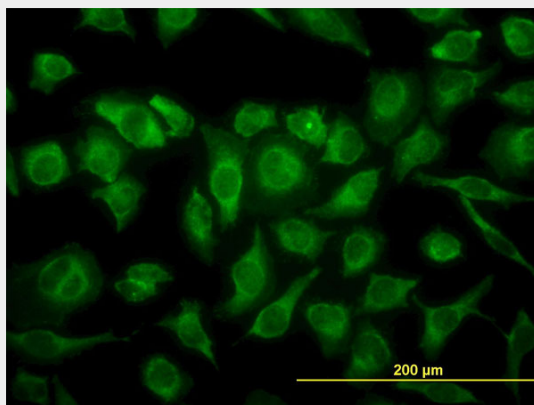
MAPK12 Antibody (monoclonal) (M05) - Protocols

Provided below are standard protocols that you may find useful for product applications.

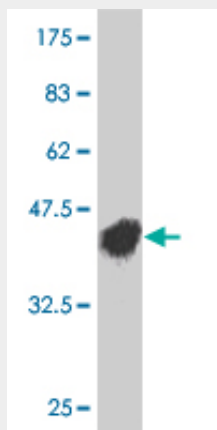
- [Western Blot](#)

- [Blocking Peptides](#)
- [Dot Blot](#)
- [Immunohistochemistry](#)
- [Immunofluorescence](#)
- [Immunoprecipitation](#)
- [Flow Cytometry](#)
- [Cell Culture](#)

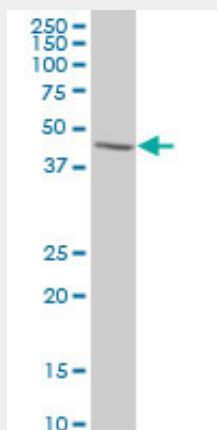
MAPK12 Antibody (monoclonal) (M05) - Images



Immunofluorescence of monoclonal antibody to MAPK12 on HeLa cell. [antibody concentration 10 ug/ml]



Antibody Reactive Against Recombinant Protein. Western Blot detection against Immunogen (38.61 KDa) .



MAPK12 monoclonal antibody (M05), clone 1B3 Western Blot analysis of MAPK12 expression in Jurkat (Cat # AT2783a)

MAPK12 Antibody (monoclonal) (M05) - Background

Activation of members of the mitogen-activated protein kinase family is a major mechanism for transduction of extracellular signals. Stress-activated protein kinases are one subclass of MAP kinases. The protein encoded by this gene functions as a signal transducer during differentiation of myoblasts to myotubes.

MAPK12 Antibody (monoclonal) (M05) - References

Variation at the NFATC2 Locus Increases the Risk of Thiazolinedinedione-Induced Edema in the Diabetes REduction Assessment with ramipril and rosiglitazone Medication (DREAM) Study. Bailey SD, et al. Diabetes Care, 2010 Jul 13. PMID 20628086. PTPH1 dephosphorylates and cooperates with p38gamma MAPK to increase ras oncogenesis through PDZ-mediated interaction. Hou SW, et al. Cancer Res, 2010 Apr 1. PMID 20332238. Gene-centric association signals for lipids and apolipoproteins identified via the HumanCVD BeadChip. Talmud PJ, et al. Am J Hum Genet, 2009 Nov. PMID 19913121. p38alpha and p38gamma mediate oncogenic ras-induced senescence through differential mechanisms. Kwong J, et al. J Biol Chem, 2009 Apr 24. PMID 19251701. Implication of p38 mitogen-activated protein kinase isoforms (alpha, beta, gamma and delta) in CD4+ T-cell infection with human immunodeficiency virus type I. Gutierrez-Sanmartin D, et al. J Gen Virol, 2008 Jul. PMID 18559936.